

## Recombinant APPL2 with His-tag (Human)

<b>Type:</b>	Recombinant	<b>Cat. No.:</b>	41140
<b>Tag:</b>	His	<b>Size:</b>	0.1 mg
<b>Source:</b>	E.Coli	<b>Purity:</b>	>95%
<b>Other names:</b>	DIP13B, FLJ10659	<b>Species:</b>	Human

### Introduction to the Molecule

APPL2, also termed as Adaptor protein, phosphotyrosine interaction, PH domain and leucine zipper containing 2, has been shown to be involved in the regulation of cell proliferation, and in the crosstalk between the adiponectin signalling and insulin signalling pathways. The encoded protein binds many other proteins, including RAB5A, APPL1, adiponectin receptors, and proteins of the NuRD/MeCP1 complex.

### Description

Total 699 AA. Mw: 78.5 kDa (calculated). N-terminal His-tag and TEV cleavage site, 36 extra AA (highlighted).

### Amino Acid Sequence

<b>MSYYHHHHH</b>	<b>DYDIPTTENL</b>	<b>YFQGAMGSGI</b>	<b>QRPTSTPAVD</b>	KLLLEEALQD
SPQTRSLLSV	FEEDAGTLTD	YTNQLLQAMQ	RVYGAQNEMC	LATQQLSKQL
LAYEKQNFAL	GKGDEEVIST	LHYFSKVVDL	LNLLHTELA	QLADTMVLPI
IQFREKDLTE	VSTLKDLFGL	ASNEHDLSMA	KYSRLPKKKE	NEKVKTEVGK
EVAAARRKQH	LSSLQYYCAL	NALQYRKQMA	MMEPMIGFAH	GQINFFKKGA
EMFSKRMDSF	LSSVADMVQS	IQVELEAEAE	KMRVSQQELL	SVDESVYTPD
SDVAAPQINR	NLIQKAGYLN	LRNKTGLVTT	TWERLYFFTQ	GGNLMCQPRG
AVAGGLIQDL	DNCSVMAVDC	EDRRYCFQIT	TPNGKSGIIL	QAESRKENEE
WICAINNISR	QIYLTDNPEA	VAIKLNQTAL	QAVTPITSFG	KKQESSCPSQ
NLKNSEMENE	NDKIVPKATA	SLPEAEELIA	PGTPIQFDIV	LPATEFLDQN
RGSRRTNPFQ	ETEDESFPFA	EDSLQQMFI	VRFLGSMVAV	TDSTTEVIYE
AMRQVLAARA	IHNIFRMTES	HLMVTSQSLR	LIDPQTQVSR	ANFELTSVTQ
FAAHQENKRL	VGFBVIRVPES	TGEESLSTYI	FESNSEGEKI	CYAINLGKEI
IEVQKDPEAL	AQLMLSIPLT	NDGKYVLLND	QPDDDDGNPN	EHRGAESEA

### Formulation

Lyophilized in 1 mg/mL in PBS.

### Reconstitution

Add deionized water to prepare a working stock solution of approximately 1 mg/mL and let the lyophilized pellet dissolve completely.

### Storage

Store lyophilized protein at -20°C. Aliquot reconstituted protein and store at -80°C. Avoid repeated freezing /thawing cycles.

## Quality Control Test

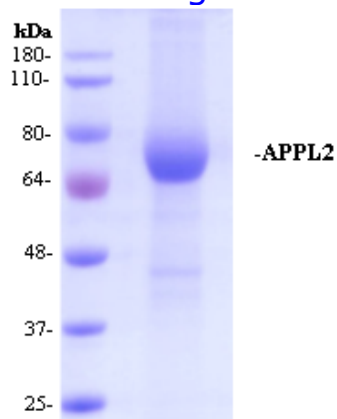
BCA to determine quantity of the protein.

SDS PAGE to determine purity of the protein.

## Applications

ELISA, Western blotting, Immunoprecipitation.

## SDS-PAGE gel



L8-37, Laboratory Block, The University of Hong Kong, 21 Sassoon Road, Hong Kong

Tel: ++852-2819-9743

Fax: ++852-2816-2095

E-mail: [antibody@hku.hk](mailto:antibody@hku.hk)

Web site: [www.antibody.hku.hk](http://www.antibody.hku.hk)