

Polyclonal Antibody against APPL2

Catalog Number: 11140

Size: 100 ug

Host: Rabbit

Introduction to the Molecule

APPL2, also termed as Adaptor protein, phosphotyrosine interaction, PH domain and leucine zipper containing 2, has been shown to be involved in the regulation of cell proliferation, and in the crosstalk between the adiponectin signalling and insulin signalling pathways. The encoded protein binds many other proteins, including RAB5A, APPL1, adiponectin receptors, and proteins of the NuRD/MeCP1 complex.

Isotype/Preparation:

Rabbit SPECIFIC IgG was purified by human APPL2 affinity chromatography.

Immunogen:

Recombinant full-length human APPL2 expressed in E. coli

Specificity:

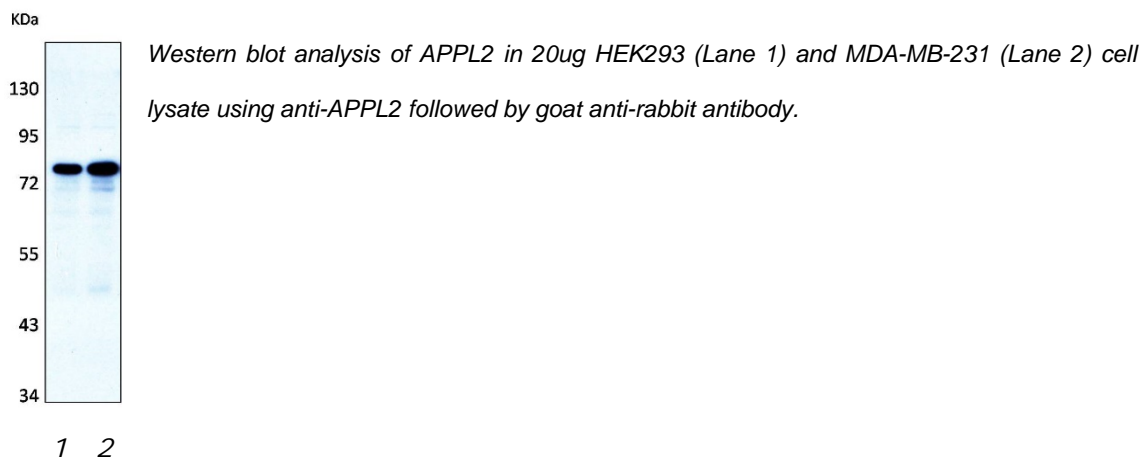
The antibody detects several types of APPL2 in different species such as human, monkey, mouse, rat etc. (about 85kDa).

Formulation:

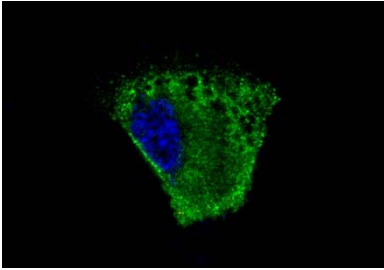
Solution in PBS. Store at -20°C . For long-term storage, aliquot and freeze at -70°C . Avoid repeated freeze/defrost cycles.

Application/Usage:

Western blot - This antibody can be used at 0.1 - 0.2 $\mu\text{g}/\text{mL}$ with the appropriate secondary reagents to detect APPL2.



Immunostaining - This antibody can be used at 2-3 µg/mL with the appropriate secondary reagents to detect APPL2.



Immunostaining of APPL2 in C₂C₁₂ cells using anti-APPL2 followed by goat anti-rabbit antibody, visualized by confocal microscopy.

ELISA - This antibody can be used at 1.0 - 2.0 µg/mL with the appropriate secondary reagents to detect APPL2.

Quality Control Test

BCA to determine quantity of the antibody

Contact Us

- Website: www.torontobioscience.com
- E-mail: sales@torontobioscience.com