

## Human Galectin-3

<b>Origin:</b>	Recombinant	<b>Cat. No.:</b>	41690
<b>Tag:</b>	N-terminal 6xHis	<b>Size:</b>	0.1 mg
<b>Source:</b>	<i>E.coli</i>	<b>Purity:</b>	>95%
<b>Other names:</b>	Gal-3, MAC-2, CBP 35, lectin L-29, AGER 3	<b>Species:</b>	Human

### Description

Expressed in *E.coli* with total 293AA. Mw: 31.1 KDa (calculated).  
N-terminal 6xHis-tag, EK recognition site and TEV cleavage site, 44 extra AA (highlighted).

**Recombinant antigen for research use or manufacturing only.**

### Introduction to the Molecule

Galectin-3 is expressed by a wide range of cell types including activated T cells, tumor cells, macrophages, osteoclasts, fibroblasts, and epithelial cells. Galectin-3 has specific binding affinity for beta-galactoside sugar moieties and has functional roles during development, innate immunity, cell apoptosis, and tumor metastasis. Galectin-3 is associated with cancer, heart failure, stroke, and inflammation.

### Amino Acid Sequence

**MRGSHHHHHH GMASMTGGQQ MGRDLYDDDD KDRWGSENL~~Y~~ FQGAADNFSL** HDALSGSGNP  
NPQGWPGAWG NQPAGAGGYP GASYPGAYPG QAPPGAYPGQ APPGAYPGAP GAYPGAPAPG  
VYPGPPSPGP AYPSSGQPSA TGAYPATGPY GAPAGPLIVP YNLPLPGGVV PRMLITILGT  
VKPNANRIAL DFQRGNDVAF HFNPRFNENN RRVIVCNTKL DNNWGREERQ SVFPFESGKP  
FKIQVLVEPD HFKVAVNDAH LLQYNHRVKK LNEISKLGIS GDIDLTSASY TMI

### Endotoxin Level

<0.01 EU per 1 µg of the protein by the LAL method.

### Formulation

Lyophilized at 1 mg/mL in PBS.

### Reconstitution

Add deionized water to prepare a working stock solution of approximately 1 mg/mL and let the lyophilized pellet dissolve completely.

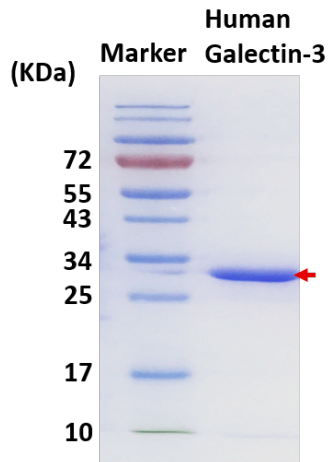
### Storage

Store lyophilized protein at -20°C. Aliquot reconstituted protein and store at -80°C. Avoid repeated freezing /thawing cycles.

### Quality Control Test

BCA to determine quantity of the protein.  
SDS PAGE to determine purity of the protein.

## SDS-PAGE gel



## Contact Us

- Website: [www.torontobioscience.com](http://www.torontobioscience.com)
- E-mail: [sales@torontobioscience.com](mailto:sales@torontobioscience.com)