

42701 Recombinant Mouse Peptidase M20 Domain-containing Protein 1 (mPM20D1)

Source:	Expressed in Human Embryonic Kidney 293 Cells
Tag:	C-terminal 6xHis
Size:	100µg
Purity:	>95%, determined by SDS-PAGE
Endotoxin Level:	<0.2EU/µg, determined by LAL Test
Other Names:	Cps1, FLJ32569

Introduction to the Molecule

Peptidase M20 domain containing 1 (PM20D1), also known as a bidirectional N-fatty-acyl amino acid synthase/hydrolase that regulates the production of N-fatty-acyl amino acids. In brown and beige adipocytes, these metabolites may act as endogenous chemical uncouplers of mitochondrial respiration in an uncoupling protein 1-independent manner, possibly through interaction with mitochondrial transporters.

Amino Acid Sequence

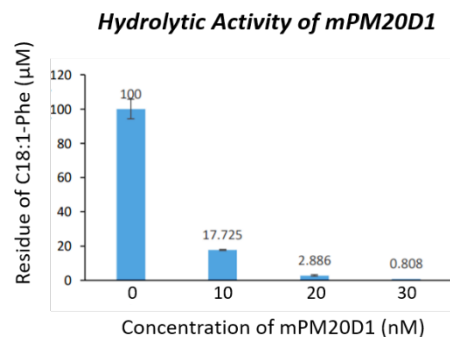
STGPRSRENRGASRIPSQFSEEERVAIKEALK
GAIQIPTVSFSHEESNTTALAEFGGEYIRKAFPT
VFHSSLVQHEVVAKYSHLFTTIQGS DPSLQP YM
ETLMETAHIDVVPAPPEGWEVPPFSGLERNGF
IYGRGALDNKNSVMETAILHALELLLIRNYSPK
RSFFIALGHDEEVS GEKGAQKISALLQARGVQ
LAFLVDEGSFILEGFIPNLEKPVAMETISVTEKG
ALDLMETLQVNMETTPGHSSAPPKETSIGILSA
AVSRLEQTPMETPNMETFGGGPLKKTMETKLL
ANEFSPINIVLRNLWLFHPIVSRIMETERNPIT
NALVRTTTALTMETFNAGIKVNVIPPLAQATIN
CRIHPSQTVHEVLELVKNTVADDRVQLHVLRS
FEPLPISPSDDQAMETGYQLLQETIRSVFPEVD
IVVPGICIAN TDTRHYANITNGMETYRFNPLPL
NPQDFSGVHGINEKVSQNYQNQVKFIFEFIQ
NADTYKEPVPHLHELE**ENLYFQGHHHHH**

Note: TEV site and 6xhis tag are highlighted

Formulation, Reconstitution and Storage

- Lyophilized at 1 mg/mL in NaCl 137mM, KCl 2.7mM, Na₂HPO₄ 10mM, KH₂PO₄ 1.8mM, pH 8.0.
- Add deionized water to prepare a working stock solution of approximately 1 mg/mL and let the lyophilized pellet dissolve completely.
- Store lyophilized protein at -20°C. Aliquot reconstituted protein and store at -80°C. Avoid repeated freezing/thawing cycles.

Bioactivity Test



SDS-PAGE Gel

